

Milton



FORESTRY PARTS



You don't need to waste your time making multiple calls – Milton CAT is your complete source for all your forestry needs, and of course, we stock the entire line of parts for QUADCO felling, saw and processor heads.

At Milton CAT you'll find competitive forestry parts pricing, unparalleled availability and service from an experienced, professional team. The Milton CAT forestry parts team is ready to support your uptime.

Quadco, leading the way in uptime.

SAW TEETH

No Shank



Concave

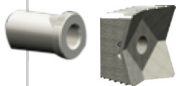


Beaver



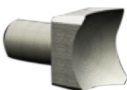
Carbide

Two-Piece



Concave
Beaver
Carbide

One-Piece



Concave
Beaver
Carbide

SAW DISCS



Standard



Segmented



Deep Gullet



QUADCO

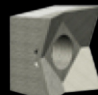
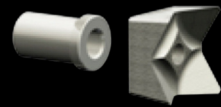
Call Milton CAT Forestry Parts
207-991-3124

Milton



www.miltoncat.com

SAW TOOTH GUIDE

	Part No	Description	Kerf	Shank Length	Shank Diameter	Bolt Size	
NO SHANK TEETH							
	NO SHANK Concave						
	QH10110T	QUAD TOOTH NO SHANK	2"	N/A	N/A	3/4"NF	
	Q10205T	QUAD TOOTH NO SHANK	2-1/4"	N/A	N/A	1"NF	
	NO SHANK Beaver						
	QH10103T	QUAD TOOTH NO SHANK	2"	N/A	N/A	3/4"NF	
	Q10133T	QUAD TOOTH NO SHANK	2-1/4"	N/A	N/A	1"NF	
	Q10233T	QUAD TOOTH NO SHANK	2-5/16"	N/A	N/A	1"NF	
	NO SHANK Carbide						
	QV4X4NSB-G1	QUAD BEAVER TIP NO SHANK	1-7/8"	N/A	N/A	3/4"NF	
	QV4X4NS-G1	QUAD SHARP TIP NO SHANK	2-1/4"	N/A	N/A	1"NF	
	QV4X4NSB-G1	QUAD BEAVER TIP NO SHANK	2-1/4"	N/A	N/A	1"NF	
TWO-PIECE TEETH							
	TWO-PIECE Concave						
	QH10120T	QUAD TOOTH SHANKLESS	2"	3/4", 1-1/2"	1"	1/2"NF	
	<i>Shank Options</i>	<i>QH10067T-3/4" Short ; QH10068T 1-1/2" Long</i>					
	Q10105T	QUAD TOOTH SHANKLESS	2-1/4"	.938", 2"	1-1/4"	1/2"NF	
	<i>Shank Options</i>	<i>Q10106T - .938" Short ; Q10117T 2" Long</i>					
	QK10022T	QUAD TOOTH SHANKLESS	2-3/8"	2"	1.234"	5/8"NF	
	<i>Shank Option</i>	<i>QK10023T - 2" Long</i>					
	TWO-PIECE Beaver						
	QH10096T	QUAD TOOTH SHANKLESS	2"	3/4", 1-1/2"	1"	1/2"NF	
	<i>Shank Options</i>	<i>QH10067T-3/4" Short ; QH10068T 1-1/2" Long</i>					
	Q10094T	QUAD TOOTH SHANKLESS CROSS BACK	2-1/4"	.938"	1-1/4"	1/2"NF	
<i>Shank Option</i>	<i>Q10093T - .938" Short</i>						
	TWO-PIECE Carbide						
	QV4X4CB-G1	QUAD TOOTH SHANKLESS BEAVER					
	<i>Shank Option</i>	<i>QK10023T - 2" Long</i>					
			2-3/8"	2"	1.234"	5/8"NF	
	ONE-PIECE TEETH						
		ONE-PIECE Concave					
		QK10012T	QUAD TOOTH SHORT SHANK	1-1/8"	0.38"	0.62"	3/8"NF
Q10001T		QUAD TOOTH SHORT SHANK	2-1/4"	0.938"	1-1/4"	1/2"NF	
QH10091T		QUAD TOOTH LONG SHANK	1-7/8"	1-3/4"	1"	1/2"NF	
QH10062T		QUAD TOOTH LONG SHANK	2"	1-1/2"	1"	1/2"NF	
Q10121T		QUAD TOOTH SHORT SHANK	1-3/8"	.1"	1"	3/8"NF	
Q10097T		QUAD TOOTH LONG SHANK	2-1/4"	2"	1-1/4"	1/2"NF	
Q10098T		QUAD TOOTH LONG SHANK	2-1/4"	2"	1-1/4"	5/8"NF	
MIK404T		QUAD TOOTH LONG SHANK	2-5/16"	2"	1.234"	5/8"NF	
		ONE-PIECE Beaver					
	QH10150T	QUAD TOOTH LONG SHANK	2"	1-1/2"	1"	1/2"NF	
	QH10078T	QUAD TOOTH SHORT SHANK	2"	3/4"	1"	1/2"NF	
	QH10098T	QUAD TOOTH LONG SHANK	2-1/8"	1-1/2"	1"	1/2"NF	
	Q10797T	QUAD TOOTH SHORT SHANK	1-3/4"	.1"	1"	1/2"NF	
	Q10635T	QUAD TOOTH SHORT SHANK	1-3/4"	.1"	1"	3/8"NF	
	Q10206T	QUAD TOOTH SHORT SHANK	1-3/8"	.1"	1"	3/8"NF	
	Q10150T	QUAD TOOTH SHORT SHANK	2-1/4"	0.938"	1-1/4"	1/2"NF	
	Q10122T	QUAD TOOTH LONG SHANK	2-1/4"	2"	1-1/4"	1/2"NF	
	Q10126T	QUAD TOOTH LONG SHANK	2-1/4"	2"	1-1/4"	5/8"NF	
	QK10024T	QUAD TOOTH LONG SHANK	2-3/8"	2"	1.234"	5/8"NF	
	ONE-PIECE Carbide						
	QV4X4-1B-G1	QUAD BEAVER TOOTH LONG SHANK	1-7/8"	1-1/2"	1"	1/2"NF	
	QV4X4B-G1	QUAD BEAVER TOOTH LONG SHANK	2-1/4"	0.938"	1-1/4"	1/2"NF	
QVK4X4B-G1	QUAD BEAVER TOOTH LONG SHANK	2-3/8"	2"	1.234"	5/8"NF		

ONE-PIECE SAW DISCS

Made with the best steel and design features available for the strongest saw disc; optional integrated bolting-flange; sizes available for all saw head makes and models. For best results, demand **QUADCO G1 carbide teeth!**

NEW - Deep Gullet Disc

FEATURES & BENEFITS

- Deep gullet design - (Patent pending) Larger chip pocket reduces resistance on the disc and teeth allowing it to cut through trees faster providing quicker load cycles
- Pocket is designed to allow chips to exit the tooth in a smooth flow without being forced past the tooth and holder, therefore decreasing disc and tooth wear
- Optimum tooth holder design and angle reduces load per tooth while promoting maximum disc and tooth life
- 4000 hour warranty pro-rated



Standard Disc

FEATURES & BENEFITS

- Optimum tooth holder design and angle reduces load per tooth while promoting maximum disc and tooth life
- 4000 hour warranty pro-rated



Use sleeves for corresponding holder dimension A

SIZE	SLEEVES
1"	QH10015 and QH10016
1-1/4"	QH10197 and QH10198
1-1/2"	Q10014 and Q10015

SEGMENTED SAW DISCS

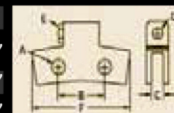
Two-Leg Full Cover - Reversible

Symmetrical design to allow tooth to be mounted on either side, which means the life of the holder can be doubled. In case of impact damage or sand wear, the tooth holder can be turned and reinstalled with proper precautions. Also, the saw disc rotation can be changed with a few simple steps.



TOOTH HOLDER GUIDE

HOLDER	DIM A	DIM B	DIM C	DIM D	DIM E	DIM F
Q10165	1"	3.500"	7/8"	3/4"	3/4"	7.47"
QH10248	1-1/4"	3-1/2"	7/8"	3/4"	3/4"	7.087"
QH10234	1-1/4"	3-1/2"	7/8"	3/4"	3/4"	7.517"
Q10176	1-1/2"	4.827"	1"	1"	1"	10.22"
Q10330	1-1/2"	4.827"	1"	1"	1"	9.728"
Q10899	1-1/2"	4.827"	1"	1"	1"	9.142"

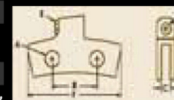


Two-Leg Full Cover - QUADCO's standard disc

This saw disc offers the highest torque rating in the industry, a 20% increase over previous models. Its highly aerodynamic design features 25% more efficiency than previous models and the increased perimeter coverage makes it ideal for abrasive conditions. A Well-proven modular concept includes replaceable tooth holders. Has a 1 1/8" thick disc center for maximum disc life.

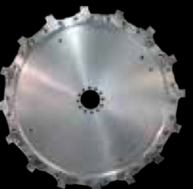


Q10177	1"	3-1/2"	7/8"	3/4"	3/4"	7.47"
Q10163	1"	3-1/2"	7/8"	1"	1/2"	7.47"
Q10195	1"	3-1/2"	7/8"	1"	1/2"	8.19"
Q10134	1-1/2"	4.827"	1"	1"	1"	10.22"
Q10141	1-1/2"	4.827"	1-1/8"	1"	1"	10.22"
Q10174	1-1/2"	4.827"	1"	1"	1"	8.18"
Q10142	1-1/2"	4.827"	1"	1-1/4"	1/2"	10.22"

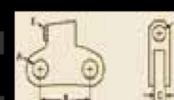


Wide Kerf Two-Leg Heavy Duty

This 1" or 1 1/8" saw disc and tooth holder combination is most commonly used where the disc is subject to high-energy impacts. This design is one of Quadco's strongest, intended for heavy duty harvesting applications. All 2 1/4" kerf teeth adapt to this disc family.

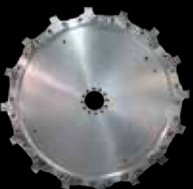


Q10080	1-1/2"	4.827"	1"	1-1/4"	1/2"	
Q10124	1-1/2"	4.827"	1"	1"	1"	
QK10020	1-1/2"	4.827"	1-1/8"	1-1/4"	1/2"	
QK10021	1-1/2"	4.827"	1-1/8"	1-1/4"	5/8"	
QK10030	1-1/2"	4.827"	1-1/8"	1"	1"	

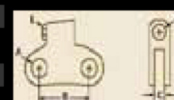


Narrow Kerf Two-Leg Regular

This lightweight 1 1/8" thick saw disc with its narrow kerf (2" and less), requires less energy and makes this disc highly efficient for its intended thinning applications.



QH10047	1"	3-1/2"	7/8"	1"	1/2"	
QH10090	1"	3-1/2"	5/8"	1"	1/2"	
QH10108	1"	3-1/2"	7/8"	3/4"	3/4"	
QH10060	1"	3-1/2"	7/8"	1"	1/2"	



- Retrofit kits available for all QUADCO disc systems
- All Two-leg discs available in both shank and no-shank holder styles

Dial direct for Forestry Parts

207-991-3124

Thank you for giving us the opportunity to prove to you our commitment to your uptime. To contact one of our forestry parts specialists, you may choose to:

Phone at 207-991-3124

Email at forestryparts@miltoncat.com

Fax 207-991-3170

Drop by your nearest Milton CAT location

We look forward to being of service!



QUADCO



Log Max



Denharco

Gator Teeth

Milford, MA
508-634-3400

North Reading, MA
978-276-2400

Wareham, MA
508-291-1200

Cranston, RI
401-946-6350

Richmond, VT
802-434-4228

Londonderry, NH
603-665-4500

Scarborough, ME
207-883-9586

Brewer, ME
207-989-1890

Syracuse, NY
315-476-9981

Batavia, NY
585-815-6200

Binghamton, NY
607-772-6500

Clifton Park, NY
518-877-8000

Milton



www.miltoncat.com