



# HTH623C

Productivity abounds with this over-achiever. The perfect match to a 25-ton carrier, the HTH623C provides exceptional power to weight in its proven durable design – achieving supreme feeding speeds, log control and agility – making short work of the toughest applications.

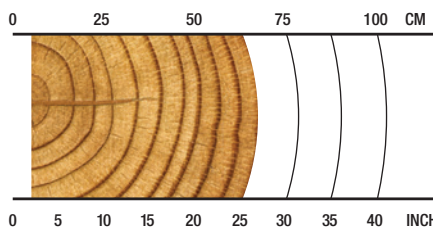
## OVERVIEW

Harvesting in late thinnings; final felling of large timber (head-appropriate), hardwood or softwood; some debarking.

## APPLICATIONS







Hardwood harvesting/processing  
Softwood harvesting/processing  
Debarking  
Shovel logging  
Late or final thinnings/clear felling

## RECOMMENDED RANGE



**5-69 cm / 2-27 in.**

## SPECS

-  **3040 kg / 6,702 lb.**  
Net Weight
-  **35 MPa / 5,076 psi**  
Max Hydraulic Pressure
-  **700 mm / 28 in.**  
Max Delimb Opening
-  **875 mm / 34 in.**  
Max Feed Roller Opening
-  **750 mm / 30 in.**  
Maximum Sawing Capacity
-  **25-34 metric ton**  
Carrier Size



**SPECIFICATIONS**

<b>DIMENSIONS</b>	
Width, head open (mm/in.)	2000 / 79
<b>WEIGHT</b>	
Excluding link and some options (kg/lb.)	3040 / 6,702
<b>ROTATION</b>	
	360 continuous
<b>DELIMBING</b>	
Delimiting knives	1 fixed/floating, 2 moving*, 1 fixed rear <small>(*option for single lower delimb)</small>
Maximum delimb opening processing arms or felling head grapple opening (mm/in.)	700 / 28
<b>DRIVE</b>	
Quantity drive rollers	3
Motor cc - option 1 (drive, fixed)	(837, 500)
Maximum feed speed - option 1 (m/s, ft/s)	5.2 / 17
Maximum roller opening (mm/in.)	875 / 34
Minimum feed arm diameter (mm/in.)	65 / 2.6
<b>TOP SAW</b>	
Maximum cut diameter (mm/in.)	450 / 18
Length of saw bar (mm/in.)	590 / 23
Chain type (in.)	0.404
Top saw motor displacement	19 cc
<b>CARRIER RANGE</b>	
Metric tons	25-34

**SPECIFICATIONS**

<b>BUTT / FELLING SAW</b>	
Standard Saw	Waratah AT 3/4
Maximum cut diameter (mm/in.)	750 / 30
Length of saw bar (mm/in.)	900 / 35
Chain type (in.)	3/4
Saw motor	45 cc
Oil tank capacity (L/gal.)	16 / 4.2
<b>HYDRAULIC SYSTEM</b>	
Maximum operating pressure (MPa/psi)	35 / 5,076
Maximum pump capacity (L/min., gal./min.)	320-360 / 85-95
<b>CONTROL AND MEASURING SYSTEM</b>	
	<b>TimberRite H-16</b>
<b>OPTIONAL EQUIPMENT</b>	
No top saw	yes
Continuous 360-degree rotation	yes
Color marking	yes
Stump spray	inquire
Fabricated processing upper delimb arms	yes
Cast processing upper delimb arms	yes
Debarking feed rollers	yes
Steel thumbnail feed rollers	yes
Alpine	yes
Non-aggressive fixed roller	yes

