



# HTH618C SERIES-III

When it comes to a high performing thinning head, the agile HTH618C Series-III is perfectly equipped. Its responsive valve and twin lower delimb arms provide superior delimiting in a durable and compact design.

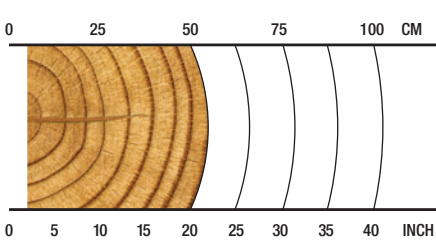
## OVERVIEW

Harvesting in early-to-late thinnings;  
productive processing or debarking.

## APPLICATIONS







Hardwood harvesting/processing  
Softwood harvesting/processing  
Debarking  
Early to late thinnings/clear felling

## RECOMMENDED RANGE



**5-51 cm / 2-20 in.**

## SPECS

-  **2300 kg / 5,071 lb.**  
Net Weight
-  **35 MPa / 5,076 psi**  
Max Hydraulic Pressure
-  **660 mm / 26 in.**  
Max Delimb Opening
-  **680 mm / 27 in.**  
Max Feed Roller Opening
-  **550 mm / 22 in.**  
Maximum Sawing Capacity
-  **22-30 metric ton**  
Carrier Size

**SPECIFICATIONS**

DIMENSIONS	
Width, head open (mm/in.)	1600 / 63
WEIGHT	
Base weight std. rotator, excluding link and some options (kg/lb.)	2300 / 5,071
ROTATION	
	360 continuous
DELIMBING	
Delimiting knives	1 fixed front, 4 moving, 1 fixed rear
Maximum delimb opening processing knives (mm/in.)	660 / 26
Maximum delimb opening harvesting knives (mm/in.)	685 / 27
DRIVE	
Quantity drive rollers	3
Motor cc - option 1 (drive, fixed)	(500, 315)
Maximum feed speed - option 1 (m/s, ft/s)	8.3 / 27
Motor cc - option 2 (drive, fixed)	(630, 400)
Maximum feed speed - option 2 (m/s, ft/s)	6.6 / 21.6
Motor cc - option 3 (drive, fixed)	(800, 500)
Maximum feed speed - option 3 (m/s, ft/s)	5.2 / 17
Maximum roller opening (mm/in.)	680 / 27
Minimum feed arm diameter (mm/in.)	50 / 2
TOP SAW	
Maximum cut diameter (mm/in.)	320 / 13
Length of saw bar (mm/in.)	420 / 17
Chain type (in.)	0.404
Top saw motor displacement	10 cc
CARRIER RANGE	
Tracked (metric tons)	22-30

**SPECIFICATIONS**

BUTT / FELLING SAW	
Standard Saw	Waratah AT 3/4"
Maximum cut diameter (mm/in.)	550 / 22
Length of saw bar (mm/in.)	740 / 29
Chain type (in.)	3/4"
Saw motor	45 cc
Oil tank capacity (L/gal.)	15 / 4
HYDRAULIC SYSTEM	
Maximum operating pressure (MPa/psi)	35 / 5,075
Maximum pump capacity (L/min.,gal./min.)	320-360 / 85-95
CONTROL AND MEASURING SYSTEM	
	<b>TimberRite H-16</b>
OPTIONAL EQUIPMENT	
Optional Butt Saw	SC100
Maximum cut diameter (mm/in.)	550 / 22
Length of saw bar (mm/in.)	750 / 29
Chain type (in.)	0.404
Motor displacement	20 cc
No top saw	
Continuous 360-degree rotation	
Color marking (SED or LED)	
Stump spray	
Cast processing upper delimb arms	
Cast harvesting (CTL) upper delimb arms	
Debarking feed rollers	
Steel thumbnail feed rollers	
Alpine outer feed wheels	
Second diameter sensor	
Find end sensor	
Harvesting guarding	
Snow hole guarding	
Pressure sensors (M, CD, T)	

